

Performance Report for: <https://giftcardindonesia.com/>

Report generated: Thu, Aug 2, 2018, 6:16 AM -0700
 Test Server Region: Vancouver, Canada
 Using: Chrome (Desktop) 62.0.3202.94, PageSpeed 1.15-gt1, YSlow 3.1.8

PageSpeed Score A (93%) ^	YSlow Score B (87%) ^	Fully Loaded Time 4.4s ^	Total Page Size 514KB ^	Requests 28 ^
-------------------------------------	---------------------------------	------------------------------------	-----------------------------------	-------------------------

Top 5 Priority Issues

Optimize the order of styles and scripts	B (83)	AVG SCORE: 94%	CSS/JS	HIGH
Leverage browser caching	B (83)	AVG SCORE: 59%	SERVER	HIGH
Optimize images	A (90)	AVG SCORE: 70%	IMAGES	HIGH
Defer parsing of JavaScript	A (92)	AVG SCORE: 70%	JS	HIGH
Specify a cache validator	A (94)	AVG SCORE: 94%	SERVER	HIGH

How does this affect me?

Studies show that users leave a site if it hasn't loaded in 4 seconds; keep your users happy and engaged by providing a fast performing website.

As if you didn't need more incentive, **Google has announced that they are using page speed in their ranking algorithm.**

About GTmetrix

We can help you develop a faster, more efficient, and all-around improved website experience for your users. We use Google PageSpeed and Yahoo! YSlow to grade your site's performance and provide actionable recommendations to fix these issues.

About the Developer



GTmetrix is developed by the good folks at **GT.net**, a Vancouver-based performance hosting company with over 22 years experience in web technology.

<https://gt.net/>

What do these grades mean?

This report is an analysis of your site with Google and Yahoo!'s metrics for how to best develop a site for optimized speed. The **grades you see represent** how well the scanned URL adheres to those rules.

Lower grades (C or lower) mean that the page can stand to be faster using better practices and optimizing your settings.

What's in this report?

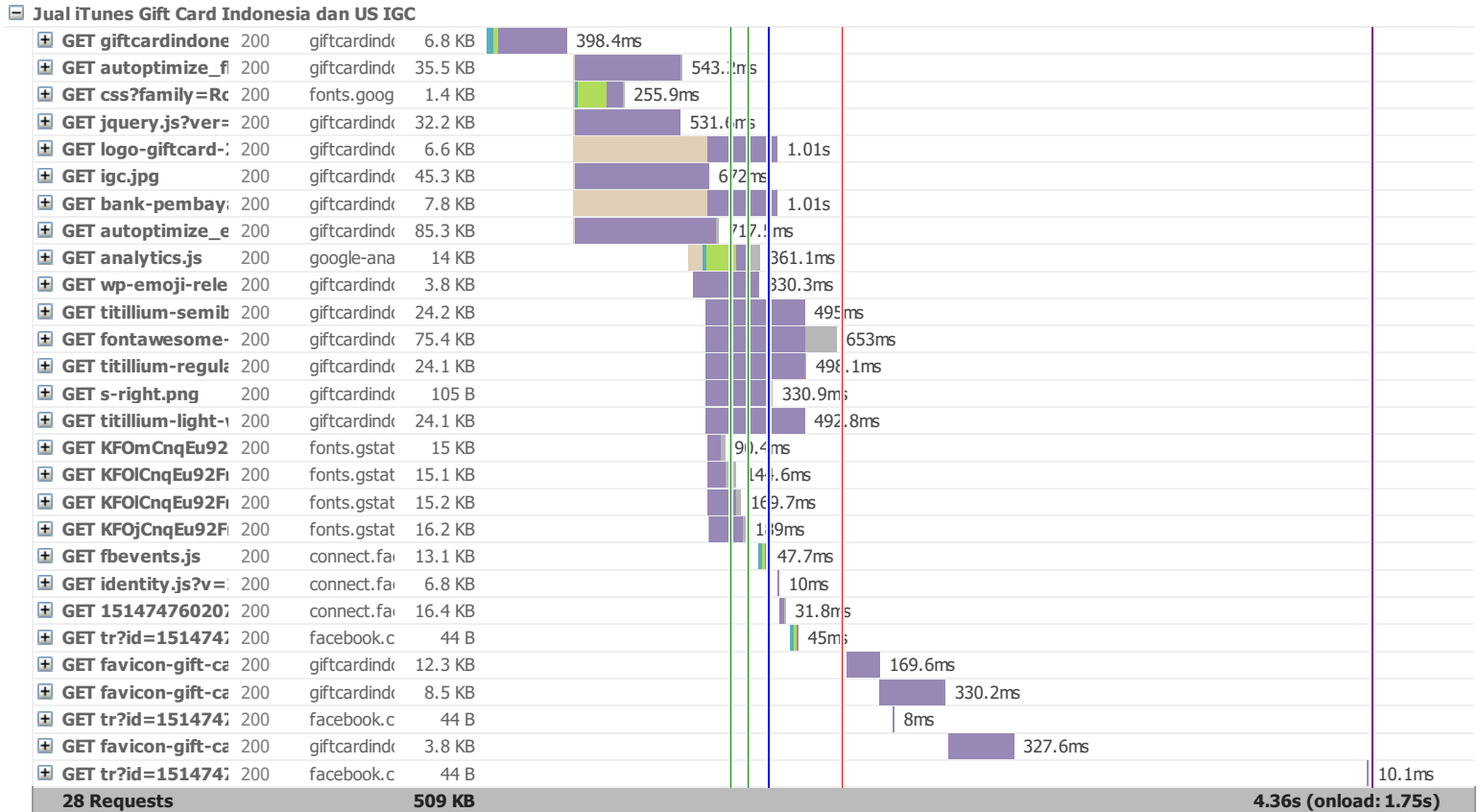
This report covers basic to technical analyses on your page. It is categorized under many headings:

- **Executive:** Overall score information and Priority Issues
- **History:** Graphed history of past performance
- **Waterfall:** Graph of your site's loading timeline
- **Technical:** In-depth PageSpeed & YSlow information

These will provide you with a snapshot of your performance.

Waterfall Chart

The waterfall chart displays the loading behaviour of your site in your selected browser. It can be used to discover simple issues such as 404's or more complex issues such as external resources blocking page rendering.



PageSpeed Recommendations

RECOMMENDATION	GRADE	RELATIVE	TYPE	PRIORITY
Optimize the order of styles and scripts		AVG SCORE: 94%	CSS/JS	HIGH
Leverage browser caching		AVG SCORE: 59%	SERVER	HIGH
Optimize images		AVG SCORE: 70%	IMAGES	HIGH
Defer parsing of JavaScript		AVG SCORE: 70%	JS	HIGH
Specify a cache validator		AVG SCORE: 94%	SERVER	HIGH
Minimize request size		AVG SCORE: 96%	CONTENT	HIGH
Minify JavaScript		AVG SCORE: 88%	JS	HIGH
Specify image dimensions		AVG SCORE: 98%	IMAGES	MEDIUM
Minify HTML		AVG SCORE: 98%	CONTENT	LOW
Minify CSS		AVG SCORE: 95%	CSS	HIGH
Remove query strings from static resources		AVG SCORE: 88%	CONTENT	LOW
Avoid bad requests		AVG SCORE: 98%	CONTENT	HIGH
Avoid landing page redirects		AVG SCORE: 98%	SERVER	HIGH
Enable gzip compression		AVG SCORE: 85%	SERVER	HIGH
Enable Keep-Alive		AVG SCORE: 96%	SERVER	HIGH
Inline small CSS		AVG SCORE: 96%	CSS	HIGH
Inline small JavaScript		AVG SCORE: 94%	JS	HIGH
Minimize redirects		AVG SCORE: 89%	CONTENT	HIGH
Put CSS in the document head		AVG SCORE: 100%	CSS	HIGH
Serve resources from a consistent URL		AVG SCORE: 88%	CONTENT	HIGH
Serve scaled images		AVG SCORE: 73%	IMAGES	HIGH
Specify a Vary: Accept-Encoding header		AVG SCORE: 96%	SERVER	LOW
Combine images using CSS sprites		AVG SCORE: 90%	IMAGES	HIGH
Avoid CSS @import		AVG SCORE: 98%	CSS	MEDIUM
Prefer asynchronous resources		AVG SCORE: 100%	JS	MEDIUM
Specify a character set early		AVG SCORE: 100%	CONTENT	MEDIUM
Avoid a character set in the meta tag		AVG SCORE: 100%	CONTENT	LOW

YSlow Recommendations

RECOMMENDATION	GRADE	RELATIVE	TYPE	PRIORITY
Add Expires headers	F (34)	▲ AVG SCORE: 26%	SERVER	HIGH
Use cookie-free domains	E (55)	◆ AVG SCORE: 50%	COOKIE	LOW
Make fewer HTTP requests	B (84)	▲ AVG SCORE: 32%	CONTENT	HIGH
Reduce DNS lookups	A (90)	▲ AVG SCORE: 69%	CONTENT	LOW
Compress components with gzip	A (100)	▲ AVG SCORE: 86%	SERVER	HIGH
Use a Content Delivery Network (CDN)	A (100)	▲ AVG SCORE: 21%	SERVER	MEDIUM
Minify JavaScript and CSS	A (100)	▲ AVG SCORE: 71%	CSS/JS	MEDIUM
Avoid URL redirects	A (100)	▲ AVG SCORE: 88%	CONTENT	MEDIUM
Make AJAX cacheable	A (100)	◆ AVG SCORE: 100%	JS	MEDIUM
Remove duplicate JavaScript and CSS	A (100)	◆ AVG SCORE: 100%	CSS/JS	MEDIUM
Avoid AlphasLoader filter	A (100)	◆ AVG SCORE: 99%	CSS	MEDIUM
Avoid HTTP 404 (Not Found) error	A (100)	◆ AVG SCORE: 98%	CONTENT	MEDIUM
Reduce the number of DOM elements	A (100)	▲ AVG SCORE: 92%	CONTENT	LOW
Use GET for AJAX requests	A (100)	◆ AVG SCORE: 100%	JS	LOW
Avoid CSS expressions	A (100)	◆ AVG SCORE: 99%	CSS	LOW
Reduce cookie size	A (100)	◆ AVG SCORE: 100%	COOKIE	LOW
Make favicon small and cacheable	A (100)	◆ AVG SCORE: 100%	IMAGES	LOW
Configure entity tags (ETags)	A (100)	▲ AVG SCORE: 91%	SERVER	LOW
Make JavaScript and CSS external	(n/a)		CSS/JS	MEDIUM